

©WNCUP

26 Orienteering
World Cup
CZECHIA



Vyšší Brod, Czechia
05-09/08 2026

BULLETIN

3


Czech
Orienteering


INTERNATIONAL ORIENTEERING FEDERATION

Welcome

Peace and quiet, fresh air, the scent of the forest...

Every time I head out into the forests around Vyšší Brod to prepare another piece of the Orienteering World Cup, I enjoy the atmosphere local nature offers. Although I'm in one of the most popular tourist regions in the Czech Republic, you only need to venture a few kilometers away from the main tourist attractions to find yourself in a different world. Not a soul in sight and you find yourself climbing over rocky fields, running up steep hills and you encounter red deer and wait for the first blueberries to grow. Every now and then a cyclist passes by, and occasionally you hear a train whistle in the distance; otherwise, it's just you, your map, your compass, and a top-quality course in the middle of a wide forest.

I believe that the landscape around Vyšší Brod and the World Cup terrains will impress you as much as they have impressed me. There's no time to wait—the Orienteering World Cup starts in less than two months. A team of 250 organizers is fine-tuning all preparations, and you can look forward to five unforgettable days in a region blessed with beautiful nature, magnificent landmarks, a region that was significantly shaped by historical events throughout the 20th century.

The Orienteering World Cup in Czechia – the best forest orienteering in the heart of Europe. Now it's all up to you. Good luck to all of you in your final preparations for the races.



Matěj Burda, Technical Director

Dear supporters of a healthy lifestyle,

The South Bohemian Region is set to host an extraordinary sporting event that will bring top athletes from around the world and the general public to our region. The Orienteering World Cup in Vyšší Brod is not only a premier competition in one of the most demanding endurance sports, but also a unique opportunity to show the beauty of our region, its nature, and the hospitality of its people.

On behalf of the South Bohemian Region, allow me to warmly welcome you to this exceptional event. I would also like to extend warm greetings to all the athletes, support staff, organizers, volunteers, and spectators who have come to our region. I greatly appreciate that the South Bohemian Region was chosen to host one of the World Cup rounds – an event that has been establishing a strong presence and prestige in the Czech Republic since 2018.

Orienteering is a sport that combines physical fitness, the ability to make quick decisions, and respect for nature. These values are also close to our region's heart, which offers ideal conditions for hosting such an event. I am convinced that the races in Vyšší Brod will bring not only thrilling sporting moments but also unforgettable experiences for all participants.

I would like to thank everyone involved in preparing this demanding event, whether they are organizers, partners, or public officials. I wish all competitors great sporting success, spectators a fantastic atmosphere, and all visitors a pleasant stay in the South Bohemian Region.

Welcome to the South Bohemian Region, and enjoy the Orienteering World Cup to the fullest.



David Štojdl, Deputy Governor of the South Bohemian Region

Contents

| | | | |
|---|----|---|----|
| Welcome..... | 2 | Section 8: Training..... | 17 |
| Contents..... | 4 | Section 9: Rules and General Information..... | 18 |
| Orienteering World Cup 2026..... | 5 | 9.1 Competition Rules..... | 18 |
| Section 1: Organisation..... | 6 | 9.2 Special Rules..... | 18 |
| 1.1 Organising Committee..... | 6 | 9.3 Classes and Participation Restrictions..... | 21 |
| 1.2 Advisers..... | 6 | 9.4 Anti-Doping Code..... | 21 |
| 1.3 Contact Information..... | 6 | 9.5 Insurance..... | 21 |
| Section 2: Programme..... | 8 | 9.6 Climate and Risks..... | 22 |
| Section 3: Venue, Access and Transport..... | 10 | 9.7 Visa..... | 22 |
| 3.1 Venue..... | 10 | 9.8 Athlete's License..... | 22 |
| 3.2 Competition Arena..... | 10 | Section 10: Media..... | 23 |
| 3.3 Transport / Travel Opportunities..... | 10 | Section 11: Competition Information..... | 23 |
| Section 4: Event Centre (Office)..... | 11 | 11.1 Punching System..... | 24 |
| Section 5: Entry..... | 13 | 11.2 GPS Tracking..... | 24 |
| 5.1 Entries and Entry Deadlines..... | 13 | 11.3 Clothing..... | 24 |
| 5.2 Entry Fees..... | 15 | Section 12: Event Information..... | 25 |
| 5.3 Payment..... | 15 | 12.1 Terrain..... | 25 |
| Section 6: Accommodation and Food..... | 16 | 12.2 Maps..... | 25 |
| 6.1 Accommodation for Teams..... | 16 | 12.3 Course Details..... | 26 |
| 6.2 Food..... | 16 | Section 13: Prize Money..... | 27 |
| Section 7: Embargoed Areas..... | 17 | Section 14: GAPP Czech O-Tour..... | 27 |
| 7.1 Information about Embargoed Area..... | 17 | | |
| 7.2 Interactive Map..... | 17 | | |
| 7.3 Previous Orienteering Maps..... | 17 | | |

Orienteering World Cup 2026

The 2026 Orienteering World Cup (OWC) will consist of the following 12 competitions

| Date | Format | Event | Location |
|--------------|------------------|-------------------|-----------------|
| 24 April | Sprint | World Cup Round 1 | Switzerland |
| 25 April | Sprint Relay | | |
| 26 April | Knock-Out Sprint | | |
| 28 May | Knock-Out Sprint | World Cup Round 2 | Sweden |
| 30 May | Sprint | | |
| 31 May | Sprint Relay | | |
| 6 August | Long Distance | World Cup Round 3 | Czechia |
| 8 August | Middle Distance | | |
| 9 August | Relay | | |
| 24 September | Long Distance | World Cup Round 4 | Lithuania |
| 26 September | Middle Distance | | |
| 27 September | Relay | | |

In the individual World Cup, athletes are awarded World Cup points as per 2026 World Cup special rules, where winners of individual races receive 100 points and top 50 are rewarded plus 5 best competitors in the B-finals with 5-4-3-2-1 points.

The Team's World Cup points are awarded according to 2026 World Cup special rules, where relays are most important and counted together with the sum of the scores in the individual races.

Section 1: Organisation

OWC Round 3 in 2026 is being organised by the Czech Orienteering Federation.

1.1 Organising Committee

| | |
|-----------------------|---------------------|
| Event Director | Jan Pícek |
| Technical Director | Matěj Burda |
| Sport Director | Radim Hošek |
| Event Secretary | Dominika Pachnerová |
| Permit Coordinator | Zdeněk Blabla |
| Results, IT Services | Vojtěch Blažek |
| Media | Dan Dvořáček |
| VIP | Jana Semrádová |
| Czech O-Tour Director | Martina Teringlová |

1.2 Advisers

| | |
|--------------------------|-------------------------|
| IOF Senior Event Adviser | Carl Göran Strutz (SWE) |
| National Event Adviser | Daniel Wolf (CZE) |
| Assistant National EA | Ondřej Macek (CZE) |

1.3 Contact Information

Official Information

<https://eventor.orienteering.org/Events/Show/8245>

Email: info@wcup.cz

Website: wcup.cz

Event Secretary

Dominika Pachnerová

Email: info@wcup.cz

Phone number: +420 731 108 782

Event Office

Jana Kubátová

Email: office@wcup.cz

Phone number: +420 770 131 208

Contact for Media

Dan Dvořáček

Email: media@wcup.cz

Phone number: +420 607 806 698

Other Contacts

Czech Orienteering Federation
Zátopkova 100/2
Praha 6 - Břevnov
169 00 Czech Republic

Website: ceskyorientak.cz
Email: csos@ceskyorientak.cz

Social media

- FB: [@wcup.cz](https://www.facebook.com/wcup.cz)
- IG: [@wcup_czechia](https://www.instagram.com/wcup_czechia)
- YouTube: [@CeskyOrientak](https://www.youtube.com/@CeskyOrientak)

Final details will be released in Bulletin 4 upon arrival at the Event Centre and on the homepage at wcup.cz.



Section 2: Programme

The final programme will be presented in Bulletin 4 and at wcup.cz when the agreements for live TV are settled.

Monday, 3 August

| | | |
|-------------|---------------------|---------------|
| | Arrival of teams | Vyšší Brod |
| 11:00–19:00 | Event Office opened | EC Vyšší Brod |
| 12:00–19:00 | Model event | Loučovice |

Tuesday, 4 August

| | | |
|-------------|--|-------------------|
| | Arrival of teams | Vyšší Brod |
| 10:00–19:00 | Model event | Loučovice |
| 9:00–12:00 | Event Office opened | EC Vyšší Brod |
| 14:30–16:45 | Technical model | EC Vyšší Brod |
| 16:45–17:15 | Opening ceremony (followed by a concert) | EC Vyšší Brod |
| 17:00–19:00 | Event Office opened | EC Vyšší Brod |
| 17:30 | Team officials meeting (Qualification + Long) | Cinema Vyšší Brod |

Wednesday, 5 August (Qualification Race)

| | | |
|-------------|--|-----------------|
| 8:00–11:00 | GAPP Czech O-Tour Prologue (part 1) | Český Krumlov |
| 8:30–15:00 | Event Office opened | Arena Martínkov |
| 8:30 | Quarantine check-in opens | |
| 10:00 | First start WOMEN | |
| 10:00 | Quarantine check-in closes | |
| 10:00 | First start MEN | |
| 16:00–18:00 | Event Office opened | EC Vyšší Brod |
| 16:00–19:30 | GAPP Czech O-Tour Prologue (part 2) | Český Krumlov |

Thursday, 6 August (Long Distance)

| | | |
|-------------|---------------------------------------|-----------------|
| 10:00–18:00 | Event Office opened | Arena Martínkov |
| 7:30 | Quarantine check-in opens | |
| ca. 10:40 | First starts | |
| 13:00–18:00 | GAPP Czech O-Tour Stage 1 (Middle) | Arena Martínkov |
| 13:00 | Quarantine check-in closes | |
| 13:10 | Afterfinish Quarantine ends | Arena Martínkov |

| | | |
|-------|---------------------|--|
| 14:20 | Last Woman at start | |
| 16:15 | Last Man at start | |

Friday, 7 August

| | | |
|-------------|--|-----------------------------|
| 10:00–19:00 | Model event | Loučovice |
| 10:00–14:30 | GAPP Czech O-Tour Stage 2 (Long), Media race | Arena Martínkov |
| 17:00–19:00 | Event Office opened | EC Vyšší Brod |
| 17:30 | Team officials meeting (Middle + Relay) | Cinema Vyšší Brod |
| 19:00 | Prize giving ceremony (Long), COT (E1, E2) | Monastery Garden Vyšší Brod |

Saturday, 8 August (Middle distance)

| | | |
|-------------|------------------------------------|-----------------|
| 8:30–18:30 | Event Office opened | Arena Martínkov |
| 8:45 | Quarantine check-in opens | |
| 10:00–14:30 | GAPP Czech O-Tour Stage 3 (Middle) | Arena Martínkov |
| Ca. 11:30 | First starts (lower finals) | |
| 12:50 | Quarantine check-in closes | |
| 13:00 | Afterfinish Quarantine ends | Arena Martínkov |

| | | |
|-------|---|-----------------------------|
| 15:20 | Last Man at start | |
| 17:07 | Last Woman at start | |
| 19:30 | Entry deadline RELAY | IOF Eventor |
| 19:00 | Prize giving ceremony (Middle) + COT E3 | Monastery Garden Vyšší Brod |

Sunday, 9 August (Relay)

| | | |
|-------------------------|---|-----------------|
| 10:00–14:30 | GAPP Czech O-Tour Stage 4 (Middle) | Arena Martínkov |
| 10:00–16:00 | Event Office opened | Arena Martínkov |
| 10:15 | Quarantine check-in opens | |
| 10:45 | Quarantine check-in closes | |
| 11:10 | Mass start Women | Arena Martínkov |
| 13:00–15:00 | VIP + IOF Family race | Arena Martínkov |
| 13:10 | Mass start Men | Arena Martínkov |
| 15:00 (at the earliest) | Closing and prize giving ceremony (Relay), COT (E4) | Arena Martínkov |

Section 3: Venue, Access and Transport

3.1 Venue

Vyšší Brod

Dubbed a “treasury of cultural and natural beauty”, this small town located on the banks of the River Vltava is the starting point for thousands of paddlers heading down the stream via Rožmberk, Zlatá Koruna and Český Krumlov, UNESCO World Heritage Site. The area above Vyšší Brod features beautiful forests with many rocks and stones.

Lipno Region

Sometimes called the “Czech sea”, Lake Lipno is set within the fascinating Šumava countryside below the ridges lining the boundary with Austria and Germany. With its length of 42 km and the maximum width of 10 km, Lipno and its surroundings offer an ideal potential for tourism. The waters of the lake attract water sports enthusiasts every year. The upper part of Lipno territory is situated in the Šumava National Park where you can hike up to the summits of around 1,300 metres.

3.2 Competition Arena

Arena Martínkov – hosting all four competitions – will be situated on a meadow near the former village of Martínkov, 4 km (10 min of driving) from the Event Centre in Vyšší Brod.

GPS Coordinates: [48.6008N, 14.2913E](#)

3.3 Transport / Travel Opportunities

Teams are encouraged to use their own transport throughout the whole OWC. We recommend transport by car/minibus. The nearest major international airports are Linz Blue Danube Airport (57 km from the Event Centre), Salzburg Airport (180 km), Václav Havel Airport Prague (220 km), Munich Airport (240 km) and Vienna Airport (250 km).



Section 4: Event Centre (Office)

VYŠŠÍ BROD, Building of the Info Centre

Address: Náměstí 104, 382 73 Vyšší Brod, Czechia

GPS Coordinates: [48.6146N, 14.3118E](#)

The parking will be in designated areas in the adjacent street. Toilets will be available there.



The Event Centre is the location for:

- Accreditation of athletes and team officials
- Information point for teams

The Event Office will be located in the Event Centre and the arena according to the schedule below.

Team officials meetings will be situated within walking distance from the EC.

Opening hours of the Event Office

| Date | Time | Place |
|---------------------|---------------------------|-----------------|
| Monday, 3 August | 11:00–19:00 | EC Vyšší Brod |
| Tuesday, 4 August | 9:00–12:00 17:00–19:00 | EC Vyšší Brod |
| Wednesday, 5 August | 8:30–15:00 | Arena Martínkov |
| Thursday, 6 August | 10:00–18:00 | Arena Martínkov |
| Friday, 7 August | 17:00–19:00 | EC Vyšší Brod |
| Saturday, 8 August | 8:30–18:30 | Arena Martínkov |
| Sunday, 9 August | 10:00–16:00 | Arena Martínkov |

Accreditation

Accreditation takes place at the Event Centre. A personal ID card will be handed out. All accredited persons must wear it at all times and present it for access to authorised zones. Athletes without accreditation will not be allowed in the race.

It is not necessary for athletes to appear in person for accreditation. One team official per team, carrying the official ID cards or passports of all team members, is sufficient.

At accreditation, every athlete receives a package with the ID card, SIAC cards if rented, a printed version of Bulletin 4, a model event map and a small present. The SIAC card is personally assigned and shall be used in all competitions. The SIAC card must not be used by other athletes.

Every athlete also receives a back-up SIAC card provided by the organiser, as a reserve in case of the primary SIAC failure. Competitors must start the race with both SIAC cards.

Parking permits for team cars are also handed out at the accreditation.

Accreditation for the World Cup is only possible if all payments are fully settled. At the Event Office, paying with a bank/credit card will be possible.

Teams need to provide a telephone number in case organisers need to quickly contact the team officials.

Team Officials Meetings (TOM)

2 TOMs will be held during World Cup, Round 3. TOM 1 (Qualification + Long) will take place on Tuesday, 4 August, 2026 and TOM 2 (Middle + Relay) on Friday 7 August, 2026. TOMs start at 17:30 and take place in the cinema of Vyšší Brod (GPS: [48.6170N, 14.3114E](#)). Parking is possible at a meadow in Vyšší Brod (GPS: [48.6184N, 14.3145E](#)).

They will be broadcasted online as well, so you can join from your accommodation. Information about online connection (software, links) will be communicated in Bulletin 4, in IOF Eventor and at the Event Centre.

Section 5: Entry

5.1 Entries and Entry Deadlines

All entries can only be made in IOF Eventor. The entry form is available from 1 January 2026 at:

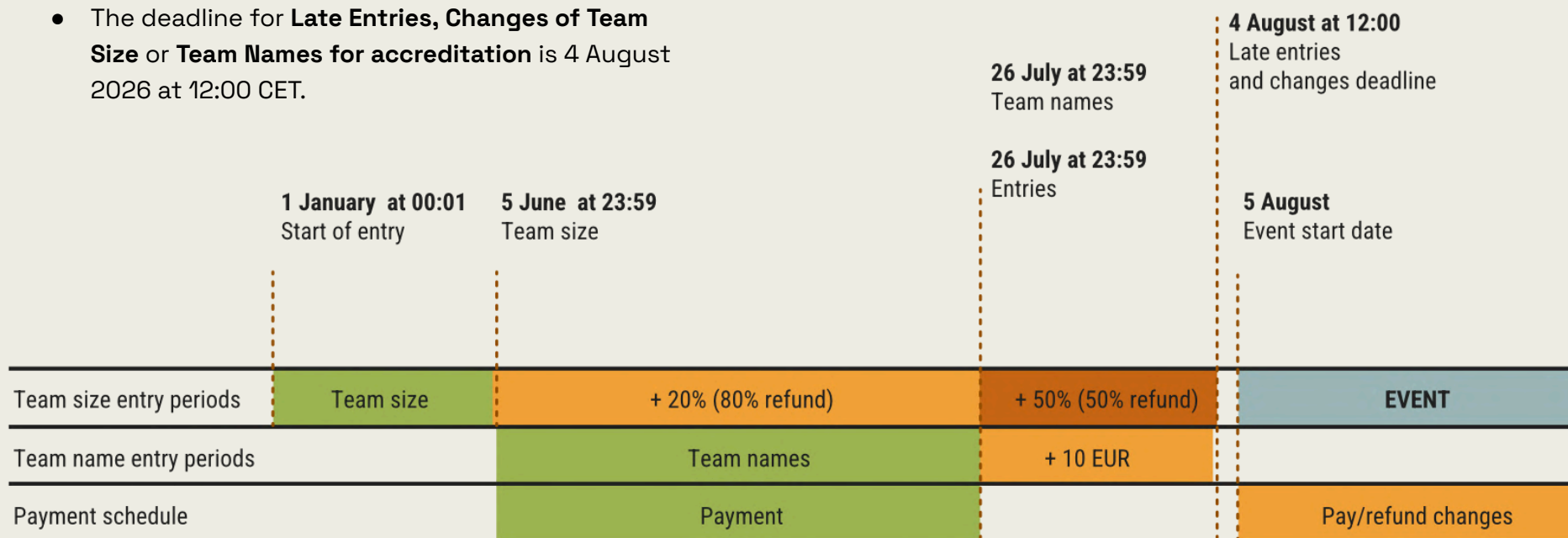
<https://eventor.orienteing.org/Events/Show/8245>

- The event start date is 5 August 2026.
- The deadline for **Team Size Entry** is 5 June 2026 (- 2 months).
- The deadline for **Team Names Entry** is 26 July 2026 (- 10 days).
- The deadline for **Late Entries, Changes of Team Size or Team Names for accreditation** is 4 August 2026 at 12:00 CET.

Team Size Entry

The following information shall be provided:

- Team manager (chosen from the list in IOF Eventor)
- Number of Team athletes (Men and Women)
- Number of Team officials (there is no maximum number of officials per team.)
- Number of Team athletes in the individual races (Federation Quota will be published by the IOF)
- Number of teams for Relay
- Rental of SIAC cards



Team Names Entry

The following information shall be provided:

- Name of each Team athlete by selecting from federation members in IOF Eventor
- SIAC card number of each athlete

Competition Entries

Names of the competitors shall be entered in IOF Eventor, on the day before an individual or relay competition.

Late Entries, Changes of Team Size or Team Names

Late entries and changes will be accepted, if possible, until **4 August 2026 at 12:00 CET**. No late entries or changes will be accepted after that date. Late entries and changes will always have a defined extra cost (surcharge).

Entry Changes

- 6 June–26 July 2026 – surcharge 20% on new entries, withdrawals with 80% refund.
- 27 July–4 August 2026 – surcharge 50% on new entries, withdrawals with 50% refund.
- After 4 August 2026 12:00 CET – no other entries or changes will be accepted.

Name Changes

- 27 July–4 August 2026 – surcharge 10 EUR
- Changes of names for competition according to IOF rules, no fee.

Late entries and changes will always be treated equally, and must be communicated directly to the organiser on office@wcup.cz. Changes in IOF Eventor after deadlines will be made by the organiser.



5.2 Entry Fees

| Category | | Fee |
|----------------------|---|---------|
| Team Officials | Per person and WC Round* | EUR 80 |
| Athletes | Middle + Long package (start fee per person for both races incl. qualification) | EUR 120 |
| | Relay (start fee per team) | EUR 180 |
| SIAC Card Rental | Per person per WC round** | EUR 10 |
| IOF Family | Per person | EUR 40 |
| IOF Guests, Partners | Per person | No fee |
| Media | Per person | No fee |

* Accreditation fee for team officials covers model event, parking in the arena and a set of competition maps.

** The pre-ordered rented SIAC cards will be handed out in the Event Office during the accreditation. A team manager shall return all rented SIAC cards at the Event Office after the last race. Any missing or lost SIAC card will be charged EUR 70 fee. SIAC cards must be ordered in the Team Size entry (5 June 2026).

5.3 Payment

Payment must be credited to the organizer's account no later than 10 days before the event starts – i.e. by 26 July 2026, otherwise the competitors will not be allowed to start. **Invoices will be issued during the second half of June 2026, please do not make any payments before receiving an invoice.** All bank costs must be covered by the payer.

Payment Details

(Note: A new bank account)

Bank: Fio banka, a.s., Na Florenci 2/139/2, 11000 Praha, Czech Republic

Account Number: 2603468074 / 2010

IBAN: CZ37 2010 0000 0026 0346 8074

BIC (SWIFT): FIOBCZPPXXX

Account Owner: Český svaz orientačních sportů, Zátopkova 100/2, 169 00 Praha 6 - Břevnov

Invoice Reference: Invoice number

Section 6: Accommodation and Food

6.1 Accommodation for Teams

As the area is a very popular summer holiday destination, we strongly recommend that you book your accommodation **as soon as possible**. Prices are significantly higher in the summer months than the rest of the year and the capacity fills up quickly.

We reserved accommodation for the athletes in the apartment complex Korzo in Lipno nad Vltavou. However, the booking had to be made in February at the latest. The teams that did so have their accommodation reserved and can check it in the [overview table](#).

Should you still have no accommodation booked, write to us at accommodation@wcup.cz and we will try to help you.

6.2 Food

Fruit and water will be available in the quarantine and team zone in the arena. Hot and cold food and drinks will be for sale in the arena. The offer will include vegetarian meals.



Section 7: Embargoed Areas

7.1 Information about Embargoed Area

According to the IOF Competition Rules (§ 26.5), embargoed areas are forbidden for all athletes who might compete in OWC Round 3, team officials and other persons, who, through knowledge of the terrain, may influence the competition results. All embargoed areas are under strict embargo. More information and maps are available at wcup.cz and eventor.orienteering.org/Documents/Event/8452/1/Embargoed-areas.

For marketing purposes, photos from the embargoed area are used. All these photos are available at [this photogallery](#). Link available also in Eventor.

7.2 Interactive Map

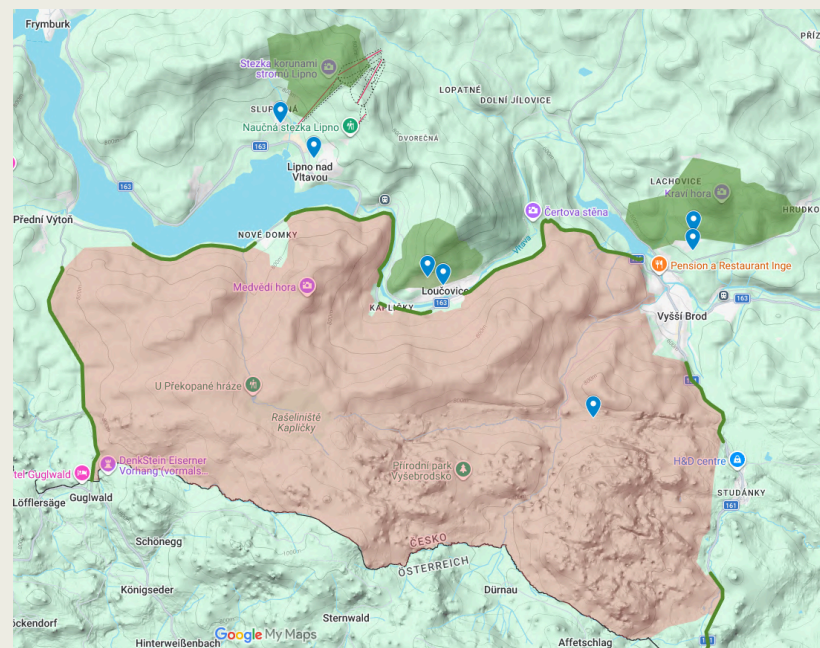
[Link to interactive map](#) (Google Maps)

7.3 Previous Orienteering Maps

[Martínkov 2](#) (1998)

[Mnichovice](#) (1998)

Available also in Eventor.



Section 8: Training

All training activities shall be coordinated with the organisers!

All information about training maps and areas and about relevant competitions in Czechia can be found at wcup.cz. Should you have any questions or wish to arrange a training stay, don't hesitate to contact us at trainings@wcup.cz.

Section 9: Rules and General Information

9.1 Competition Rules

The Competition Rules for IOF Foot Orienteering Events 2026 valid from 1 January 2026 and the IOF Orienteering World Cup 2026 Special Rules apply.

Latest version of the Rules is available on the [IOF webpage](#).

9.2 Special Rules

In accordance with IOF Competition Rules (§ 8.5) we list all relevant Special Rules, as they are stated in the document.

Text in brackets in italic are our comments, clarifications and specifications.

Qualification

For Competitions 7 and 8 (*Long and Middle Finals*), a separate qualification race with 3 heats for both men and women is used on the day before the day of Competition 7 (*Long Final*) according to IOF Competition Rule 12.8. In the A-finals of Competitions 7 and 8 (*Long and Middle Finals*), the competitors placed number 20 and better in each qualification race heat may participate.

Further competitors are selected to run the A-finals. The best placed competitor from regions which do not have a competitor in the first 20 of any heat, considered in the order of their placing in the qualification race heats (If two competitors from the same region have the same place in different heats, the one who is the least time behind the winner of their heat is chosen). In order to be selected for the A-final, a competitor must have been within 100% of the heat winner's time in their qualification race. The regional spots are additional to the 60 qualifiers and so may add up to 4 more competitors to the A-finals.

The qualification races should be a mixture of middle distance and long distance character, including both short, technical legs with distinct changes of directions as well as some longer legs with route choices. The winning time shall be 45-52 minutes – to be confirmed in Bulletin 3 (*48-52 minutes*). The map scale shall be 1:10 000 (*and so it is*).

There is a B-final for competitors placed 42nd or better in the qualification race, but otherwise failing to qualify for the A-finals in Competitions 7 and 8 (*Long and Middle Finals*) with winning times of 88 and 30 minutes respectively.

There is a C-final for competitors placed 43rd or lower in the qualification race, but otherwise failing to qualify for the A- or B-finals in Competitions 7 and 8 (*Long and Middle Finals*) with winning times of 80 and 30 minutes respectively. If there are 20 or fewer runners qualified for the C-final, then all these runners should run in the B-final.

For Competition 8 (*Middle Final*), the A-final will consist of all the A-finalists from Competition 7 (*Long Final*), regardless of their result in Competition 7, plus the top 10 finishers from the B-final in Competition 7, plus the top 1 finisher from the C-final. For Competition 8, the B-final will consist of all the B-finalists from Competition 7, except those

promoted to the A-final, plus finishers 2-6 from the C-final. If there are 20 or fewer runners qualified for the C-final, then all these runners should run in the B-final.

Start Order

In the qualification race, the start order is determined by the order of the World Ranking as published on 3 August 2026 (best ranked starting last).

In Competition 7 (*Long distance, A-final*), the starting order must be drawn in groups. Within each group the start order is randomised and Rule 12.7 applies. The groups will be based on the IOF World Ranking as of 3 August 2026. Starting group 1 has 10 runners, starting groups 2 & 3 have 15 runners, while starting group 4 has all the remaining runners. The starting sequence of the starting groups is that starting group 4 starts first followed by starting groups 3, 2 & 1.

In Competition 7 (*Long distance, B- and C-finals*) the starting order is determined by the order of the World Ranking as published on 3 August 2026 (best ranked starting last), irrespective of the results of the qualification race.

If any competitor confirms that she / he will not start Competition 7 by 5 August, 18:00, then the start list will be adjusted so that there are no empty spots in the start list. The list of qualified competitors will not change.

In Competition 8 (*Middle distance, A-final*), the starting order must be drawn in groups. Within each group the start order is randomised and Rule 12.7 applies. The groups will be based on the IOF World Ranking as of 3 August 2026. Starting group 1 has 10 runners, starting groups 2, 3 & 4 have 15 runners, while starting group 5 has all the remaining runners. The starting sequence of the starting groups is that starting group 5 starts first followed by starting groups 4, 3, 2 & 1.

In Competition 8 (*Middle distance, B- and C-finals*) the starting order is determined by the order of the World Ranking as published on 3 August 2026 (best ranked starting last).

If any competitor confirms that she / he will not start Competition 8 by 7 August, 12:00, then the start list will be adjusted so that there are no empty spots in the start list. The list of qualified competitors will not change.

Start Intervals

Forest Qualification race for competitions 7 & 8: the starting interval is 3 minutes.

Competition 7 (Long distance): the starting interval is 3 minutes for the A-final. The starting interval is 2 or 3 minutes for the B- and C-finals, subject to SEA approval (*3 minutes it is*).

Competition 8 (Middle distance): the starting interval is 2 minutes for the A-final and at least the last 30 starters in the B-final. For all other starters in the B-final and the C-final, the starting interval may be 1, 1.5 or 2 minutes, as approved by the SEA (*2 minutes it is*).

Scoring System

For all individual competitions, points are awarded as shown below:

| | |
|------------------------|------------------------|
| 1st place = 100 points | 11th place = 49 points |
| 2nd place = 90 points | 12th place = 47 points |
| 3rd place = 80 points | 13th place = 45 points |
| 4th place = 75 points | 14th place = 43 points |
| 5th place = 70 points | 15th place = 41 points |
| 6th place = 66 points | 16th place = 39 points |
| 7th place = 62 points | 17th place = 37 points |
| 8th place = 58 points | 18th place = 35 points |
| 9th place = 55 points | 19th place = 33 points |
| 10th place = 52 points | 20th place = 31 points |

For places 21–50, points equal (51 minus placing) i.e. 21st place = 30 points, 38th place = 13 points, etc. until 50th place = 1 point

In Competitions 7 & 8 World Cup points will also be awarded to the 5 best competitors in the B-final: 5-4-3-2-1 points.

In the case of a tie, the tied competitors each receive the same points as if they had each been placed in the highest of the tied positions. Competitors who are not placed receive no points.

World Cup standings are defined as the sum of all scores.

National quotas for all individual competitions

All Federations can enter 8 competitors for each class in all individual competitions.

A Federation may enter any competitor irrespective of her/his position in the IOF World Rankings lists.

No personal wild card places are offered in the World Cup 2026.

Participation in Relay Competition

A Federation may enter 3 teams each consisting of 3 competitors in each class.

According to the Rule 24.13., if a Federation is represented by more than one team in a relay class, only the team with the best result is considered in determining the placings (and hence, can be awarded in the prize-giving ceremony).

Incomplete teams are allowed to start. Teams with competitors from more than one Federation are not allowed to start.

The start list must be set up according to the Team World Cup standings as of the end of the last World Cup round (best having the lowest start number). Teams other than a Federation's first team must have a higher start number than all Federation's first teams. Third teams must have a higher start number than second teams. Amongst

the group of second and third teams, start numbers may be allocated at the organisers' discretion.

Scoring

Team World Cup points are awarded separately in the men's and women's relay competitions as follows:

| | |
|-------------------------|------------------------|
| 1st place = 500 points | 16th place = 75 points |
| 2nd place = 400 points | 17th place = 70 points |
| 3rd place = 300 points | 18th place = 65 points |
| 4th place = 250 points | 19th place = 60 points |
| 5th place = 225 points | 20th place = 55 points |
| 6th place = 200 points | 21st place = 50 points |
| 7th place = 180 points | 22nd place = 45 points |
| 8th place = 160 points | 23rd place = 40 points |
| 9th place = 145 points | 24th place = 35 points |
| 10th place = 130 points | 25th place = 30 points |
| 11th place = 120 points | 26th place = 25 points |
| 12th place = 110 points | 27th place = 20 points |
| 13th place = 100 points | 28th place = 15 points |
| 14th place = 90 points | 29th place = 10 points |
| 15th place = 80 points | 30th place = 5 points |

In the case of a tie, the tied teams each receive the same points as if they had each been placed in the highest of the tied positions. Teams that are not placed receive no points. According to Rule 24.13., if a Federation is represented by more than one team in a relay class, only the team with the best result is considered in determining the placings. In each individual competition (1, 3, 4, 5, 7, 8, 10 & 11), the team score for a Federation is the sum of the individual World Cup points – best 4 score in the men's competition and best 4 score in the women's competition.

9.3 Classes and Participation Restrictions

There are two classes; Women and Men. Participation restrictions, classes and qualification system will follow the IOF Orienteering World Cup 2026 Special Rules (Chapter 9.2).

According to the IOF Council's decision, Russian and Belarusian orienteering athletes, in all IOF disciplines, will not be allowed to participate in IOF events. Athletes will also not be allowed to participate as neutral athletes.

9.4 Anti-Doping Code

Doping is strictly forbidden, and the organizers of the Orienteering World Cup 2026 are dedicated to supporting the Anti-Doping authorities in their work. Doping controls may be carried out any time during the competitions in accordance with the procedures described in the WADA International Standard of Testing and Investigations. The IOF Anti-Doping Rules and the 2026 World Anti-Doping Code apply as of 1 January 2026. Athletes who are selected for doping control must bring an official identification (with photo) to the doping test area. The athlete should also present the personal therapeutic use exemption (TUE), if applicable. In general, it is advisable that athletes take their ID to all competitions and events.

For more information, see: orienteering.sport/iof/anti-doping.

9.5 Insurance

The organisers decline any liability that might occur through participation in the IOF Orienteering World Cup Events and trainings. Each person participates at their own risk and is responsible for their own insurance coverage (illness and accident).



9.6 Climate and Risks

The average minimum temperature (usually the minimum temperature is noted during the night) in Vyšší Brod in August is 15.5°C. The average maximum daytime temperature is around 24.0 °C. The amount of rain in August is normal with an average of 92 mm. It rains on average a total of 13 days. Wild bees may be encountered in the areas. Ticks, carrying Tick-borne encephalitis and Lyme disease are present.

The graph below shows temperature and humidity trends in Vyšší Brod during August 2025 (source: Meteoblue).

9.7 Visa

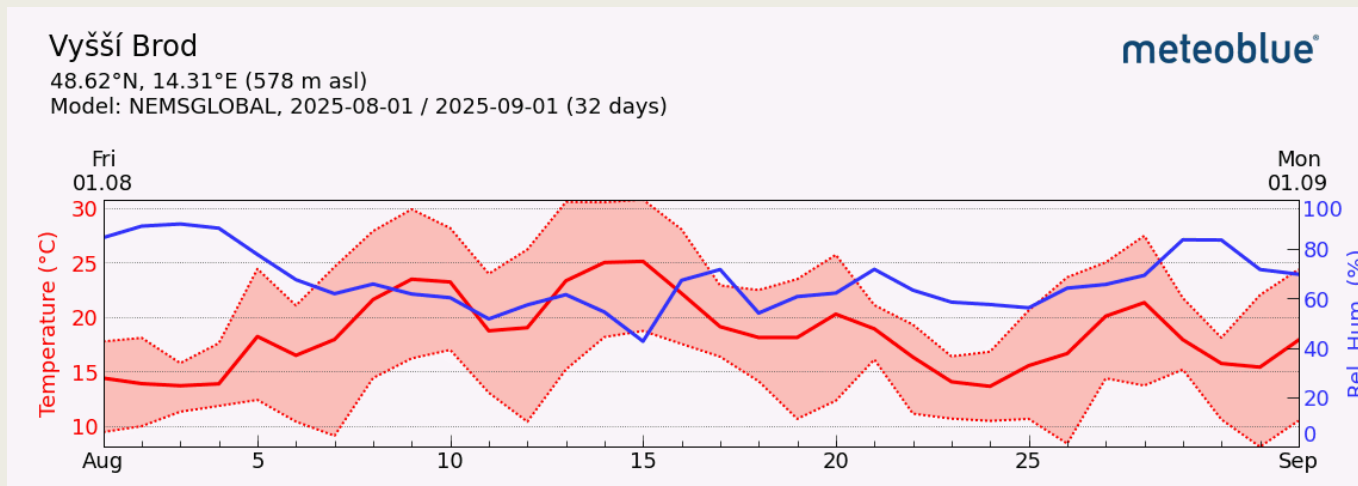
According to current regulations citizens of some countries must obtain a visa in order to enter Czechia. Please note that conditions of entry to Czechia can change and all Orienteering World Cup participants are advised to keep up to date of the current situation.

Please visit

https://mzv.gov.cz/jnp/en/information_for aliens/index.html

9.8 Athlete's License

All athletes need to have an [IOF athlete's license](#) to participate at the World Cup races.



Section 10: Media

Journalists, photographers, camera personnel and social media content creators are welcome.

All registrations are made in [IOF Eventor](#), VIP and media entry section. Please make sure you select the correct accreditation type - media. The deadline for registration is 26 July. No registration fee applies.

The media service includes:

- Access to media tent with workstations
- Wi-Fi, electricity, printers
- Maps and start lists
- Live services (results, TV production, GPS)
- Access to photo controls and photo spots in arenas
- Coffee/tea, refreshments
- Participation in Media race

More information: Dan Dvořáček (media@wcup.cz, +420 607 860 698)

Media Race

The Media race will be part of GAPP Czech O-Tour Stage 2 on Friday, 7 August. Simple orienteering course of 3–5 km. Free start from 10:00. Entries are to be made until 26 July via Google [Forms](#). Free of charge for accredited media. For more information contact info@o-tour.cz.



Section 11: Competition Information

11.1 Punching System

SPORTident Air+ punching will be used for all competitions. OWC participants are requested to use their own SIAC-cards as primary SIAC during the event.

SIAC card numbers must be provided with the Team Names Entry via Eventor by 26 July.

The organiser will offer SIAC cards for rent, they can be booked through IOF Eventor as a service with the Team Size entry (5 June). Later SIAC-cards orders are possible until 30 June at the latest, after this date the organisers no longer guarantee that they will have SIAC cards available.

In addition, there will be a back-up SIAC card provided by the organiser to every competitor, as a reserve in case of the primary SIAC failure. **Competitors must start the race with both SIAC cards.**

Detailed punching procedure will be presented in Bulletin 4.

SIAC card changes must be communicated directly to the organiser at office@wcup.cz as soon as possible.

11.2 GPS Tracking

In every race, competitors are asked to carry a GPS tracking device. It has to be carried on the back of the competitor in an elastic harness. We encourage the athletes to wear their own harnesses. Harnesses can be also borrowed from the organisers.

GPS tracking will be used for live TV production, arena production on the big video screen and live online transmission. Detailed information about picking up the GPS units and borrowing the harnesses will be presented in Bulletin 4.

11.3 Clothing

There are no regulations regarding clothing or shoes.

Section 12: Event Information

12.1 Terrain

Altitude between 700 - 1,000 meters a.s.l.

Submountainous forest with rocky towns and stony areas and details, in some parts marshy areas, rather good vehicle track network and sparse path network, various runnability and visibility from very good to impenetrable green.

Qualification: Irregular path network, chaotic vegetation in some places.

Long: Dominantly good runnability with some larger thickets and some areas with undergrowth. Remains of abandoned villages.

Middle: Runnability decreased by stony ground in most parts and by vegetation in some parts.

Relay: Rather good runnability, developed path network.

12.2 Maps

According to ISOM 2017-2 rev. 6 specification.

Surveyed by Zdeněk Sokolář, Jan Drbal, Daniel Lebar, Ondřej Prášil. Revision by Zdeněk Rajnošek and Zdeněk Janů.

Map material: Gprint 115 g/m², sealed in a plastic bag.

Printing company: Žaket Praha (both offset and digital print), IOF certified printer.

| Discipline | Scale / contour interval | Print type | Map size |
|---------------|--------------------------|---------------|--------------|
| Qualification | 1 : 10 000 / 5 m | offset print | 24 x 40 cm |
| Long | 1 : 15 000 / 5 m | offset print | 30 x 30 cm |
| Middle | 1 : 10 000 / 5 m | offset print | 30 x 30 cm |
| Relay | 1 : 10 000 / 5 m | digital print | 29.7 x 21 cm |



12.3 Course Details

| Discipline | Course planners | Class | Expected winning times (min) | Course length (km) | Climb (m) | No. of controls | Refreshment points |
|--------------------|------------------------------|----------------|------------------------------|--------------------|-----------|-----------------|--------------------|
| Qualification * | Radek Teringl, Jan Flašar | Men Heat 1-3 | 48-52 | 7.9 | 450 | 21 | 2 |
| | | Women Heat 1-3 | | 6.4 | 380 | 17 | |
| Long** | Martin Poklop, Radek Teringl | Men A | 88-92 | 15.3 | 735 | 30 | 5 |
| | | Women A | | 13.0 | 595 | 30 | |
| | | Men B | 88 | 13.6 | 555 | 22 | 4 |
| | | Women B | | 11.2 | 490 | 17 | 3 |
| | | Men C | 80 | 12.3 | 510 | 19 | |
| Middle** | Radim Hošek, Lenka Voštová | Men A | 31-35 | 5.5 | 150 | 22 | 1 |
| | | Women A | | 4.5 | 130 | 18 | |
| | | Men B | 30 | 4.7 | 140 | 16 | |
| | | Women B | | 4.0 | 95 | 14 | |
| | | Men C | | 4.0 | 115 | 15 | |
| Relay*** (per leg) | Matyáš Štregl, Filip Hulec | Men | 29-31**** | 5.3 | 285 | 19-20 | 1 |
| | | Women | | 4.8 | 235 | 17-18 | |

*combined course of middle and long parts

** Parameters for Women C final will be published in Bulletin 4 in case that the number of applied participants in Women class requires conducting of C-finals.

*** 3-leg relay

**** Shortening compared to the times stated in Bulletin 1/2 upon IOF requirements.

Section 13: Prize Money

Prize money in the IOF Orienteering World Cup 2026 is distributed according to the following schedule. All sums are set in Euro.

| Place | Individual race | Relay race | Total Individual World Cup |
|-------|-----------------|------------|----------------------------|
| 1 | 1,000 | 1,000 | 5,000 |
| 2 | 700 | 700 | 2,000 |
| 3 | 400 | 400 | 1,000 |
| 4 | 200 | | 600 |
| 5 | 200 | | 500 |
| 6 | 200 | | 400 |

Section 14: GAPP Czech O-Tour

We would like to invite fans, spectators and the sporting public to participate in the accompanying GAPP Czech O-Tour races which will offer courses for all age categories and different levels of orienteering difficulty. Between 5–9 August 2026, four races will be organized in the World Cup terrains and a prologue sprint race in Český Krumlov (UNESCO). Detailed information is available at o-tour.cz.

Entries until July 8, 2026 via [ORIS](#) (separate [entries](#) for Český Krumlov).

| GAPP Czech O-Tour Programme | | | |
|-----------------------------|-------------------|-----------------|--|
| Date | Format | Venue | First start |
| Wednesday, 5 August | Prologue – Sprint | Český Krumlov | Start slots – 8:00–10:15 and 16:00–18:45 |
| Thursday, 6 August | E1 – Middle | Arena Martínkov | 13:00 |
| Friday, 7 August | E2 – Long | Arena Martínkov | 10:00 |
| Saturday, 8 August | E3 – Middle | Arena Martínkov | 10:00 |
| Sunday, 9 August | E4 – Middle | Arena Martínkov | 10:00 |

GAPP
CZECH
o-TOUR

oWNCUP
26 Orienteering
World Cup
CZECHIA

WORLD CUP TERRAINS
4 STAGES + SPRINT
ENTRIES UNTIL JULY 8



o-tour.cz



@czechotour



@czechotour



Partners

Main Partners



Main Institutional Partners



Institutional Partners



Partners






The event takes place under the auspices of the President of the Czech Republic, Petr Pavel; the President of the Senate of the Parliament of the Czech Republic, Miloš Vystrčil; and the National Sports Agency.


Czech
Orienteering



WNCUP 26

www.wcup.cz

-  @wcup.cz
-  @wcup_czechia
-  @ceskyorientak

